

FHC0110 Series 10/100M External Power Supply Media Converter



Features

- All Converters comply with IEEE 802.3 & 802.3u Fast Ethernet Standards
- LED Indication: FX-100,FX-Link/Act,TX-100,TX-Link/Act,FDX,PWR
- Provide one RJ-45 twisted pair 10/100Mbps Ethernet port and one 100BASE-Fx port
- 100BASE-Tx port 10M/100M and full/half duplex auto-negotiation
- Voltage supervisor
- External power supply
- Wavelength 850nm .1310nm. 1550nm selectable

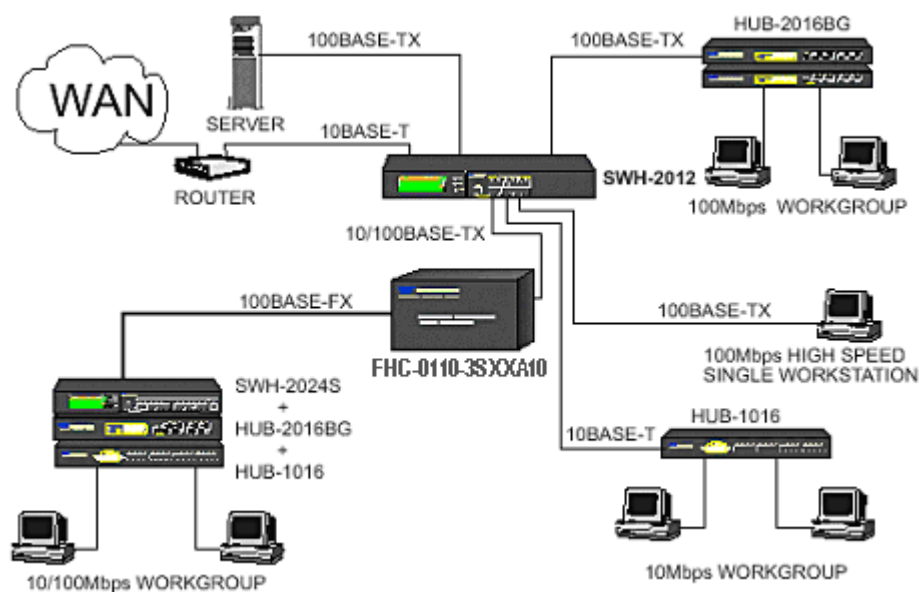
Description

The FHC0110 Series of external power supply media converter are compact, cost-effective, low dissipative, high reliable device for converting data signal between 10/100 Base-Tx and 100 Base-Fx fast Ethernet bridging. The 10/100M External Power Supply Media Converter is a compact product housed in a metal case to fulfil, as do all FHC0110 Series Converters, comply with FCC emission standards. The 100Base-TX and the 100Base-FX converter feature LED diagnostics for FX-100, FX-Link/Act,TX-100,TX-Link/Act,FDX,PWR

All converters are fully compliant with the IEEE 802.3 & 802.3u Fast Ethernet standards and feature one STP-RJ45 10/100Base-TX port as well as one Fiber Optic 100Base-FX (SC/ST/FC) port.

The FHC-0110 Series is used in applications where multimode fiber is installed while the FHC0110 Series can be used where single mode fiber cables are in use. The powerful features are as 10/100 Auto Negotiation, Auto cross over for TP port , Voltage supervisor, and support switch mode & pure converter mode. Installation of the Fast Ethernet converter is simple and. Straightforward. It is possible to protect the original investment in such devices by using a FHC-0110 Series External Power Supply Media Converter as a solution that is able to prolong the life of this type of equipment.

Application



Specification

Standard

IEEE 802.3 10Base-T
IEEE 802.3u 100Base-TX & 100Base-FX

Interface

10/100Base-T: 1X RJ45 connector
100Base-FX: 1X SC simplex connector

Switching Method

Store and forward

Data Transfer Rate

200 Mbps-Full duplex

MAC table

1K Entries

Filtering Rate

Filt. Rate - Ethernet: 14,880 pps

Filt. Rate - Fast Ethernet:

148,800 pps

Power

Ext. Power Supply, DC 5V, 1A

Power consumption: 5W

Typical Operation &

Storage Temperature

Operation: 0° ~ 70

Storage Temperature: -40° ~ 85

Humidity: 5% ~ 90% non-condensing

Dimension and Weight

Size: 70 x 94 x 27mm

(WxDxH)

Shipping Weight: 0.6KG

Emission/Safety

FCC Class A, CE

* For further reports, please contact us for update.



Typical Optical Power Budget

TYPE	FHC-0110-3S20A10
Connector Type	SC/FC
Wavelength	1310nm
Typical Distance	20Km
Min TX PWR	-18.0dBm
Max TX PWR	- 7.0dBm
Sensitivity	-28.0dBm
Link Budget	10.0dB
Price	95 EUR

The Product Type Of You Need Is[]

Single-Mode

FHC-0110-3S20A10

SC connector, single-mode, 20km, double fiber